

P-900

GENERAL

Smart designed purgometer with all stainless steel body. Unified material achieves effective price and quick delivery.

MAJOR APPLICATIONS

Corrosion resistant equipments

STANDARD SPECIFICATION

Measuring object		Liquids and gases	
Measuring range	Air	Min. 80~800 NmL /min. Max. 6~60 NL/min.	· Air at 0°C, 1atm · When selecting flow range, refer to standard flow rate table. · In case Op. Press at gas is not 1atm, refer to page 1.
	Water	Min. 5~50 mL/min. Max. 0.25~2.5 L/min.	
Range ability		10:1	
Accuracy		± 3%F.S./P-902 ± 5%F.S./P-901	
Max. Op. Press.		8kgf/cm ² G(0.8MPa)	
Max. Op. Temp.		120°C	
Material		Std. Option (Specify by model code)	
Body	Body	SUS304	SUS316 is also available
	Tapered tube	Pyrex glass	
	Packing	Viton	
	Support	SUS304	
	Cover	Poly-carbonate	
Connection	Std.	Rc1/4	Refer to ordering information for details.
	Opt.	1/4NPT	
Mounting	Std.	Thread mount onto panel front	Refer to ordering information for details.
	Opt.		
Weight (std. type)		0.5kg(P-901)	

ALARM AND ANALOG OUTPUT

Type	Availability	Reference pages
Reed switch type alarm unit	General	x
	CE, UL Version	
PAU Optical alarm unit	x	x
Optical alarm unit	x	
Analog output unit	x	

STANDARD FLOW RATE TABLE

(In case Op. Press at gas is not 1atm, refer to page 1.)

In case alarm analog output code is 0			
AIR(1atm,0°C)		Water	
80~800	NmL/min	5 ~ 50	mL/min
0.1~1	NL/min		
0.2~2	NL/min	10~100	mL/min
0.3~3	NL/min	20~200	mL/min
0.5~5	NL/min	30~300	mL/min
1~10	NL/min	50~500	mL/min
2~20	NL/min		
3~30	NL/min	0.1~ 1	L/min
5~50	NL/min	0.15~1.5	L/min
		0.2~ 2	L/min
6~60	NL/min	0.25~2.5	L/min

OTHER AVAILABLE OPTIONS

You can specify the following options:

Double graduations, special graduations, built-in check valve type, built-in rubber joint type, built-in joint type, etc.

(For details, refer to ⑥ Other Option on page 60).

DIMENSION TABLE

Model	Dimension (mm)	
	L1	L2
P-901	146	114
P-902	256	224

Standard Material

Parts name	Standard material	Available material
Body	SUS304	SUS316
Tapered tube	Pyrex glass	
Float	SUS316/Glass	Ruby
Packing	Viton	CR
Valve	SUS304	SUS316
Mounting board	SUS304	
Cover	Poly-carbonate	

Parts whose names are described in **bold letters** are in contact with fluids to be measured.

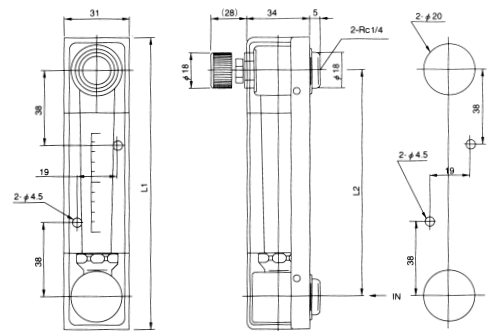


BASIC MODEL CODE

SERIES NAME	VALVE	ALARM ANALOG OUTPUT	WETTED PARTS MATERIAL	PACKING MATERIAL	CONNECTION TYPE	CONNECTION SIZE	EXAMPLE	DESCRIPTION																																																		
P-90	1	-L	0	-4	F	-F	2	/																																																		
										L	VALVE	ALARM ANALOG OUTPUT	WETTED PARTS MATERIAL	PACKING MATERIAL	CONNECTION TYPE	CONNECTION SIZE	/																																									
																			0	Not provided	Z	Special	R	Rc thread(Standard)																																		
																									L	Bottom (gas for atmospheric pressure scale)	N	NPT thread																														
																													U	Top (gas for pressure scale or for negative pressure on the secondary side)	Z	Special																										
																																	1	114mm	F	Viton																						
																																					2	224mm	Z	Special																		
																																									9	Special	4	SUS304 (Standard)	Only connection type code R can be selected													
																																														6	SUS316	Only connection type code N can be selected										
																																																	Z	Special								
																																																			0	Not provided	Z	Special				
																																																							L	Bottom (gas for atmospheric pressure scale)	Z	Special
1	114mm	Z	Special																																																							
				2	224mm	Z	Special																																																			
								9	Special	Z	Special																																															

DIMENSIONS

STANDARD TYPE (P-90□-U0-4F-RZ)



PANEL CUT

ORDERING INFORMATION

Basic model code	Designation items for detailed specifications					
P-90 □-□□-□□-□□	①	②	③	④	⑤	⑥
(Use model code table for selection)	Fluid name	Measuring range	Press.	Temp.	Mounting Option	Other Option
	(For specification procedure, refer to page 57)					