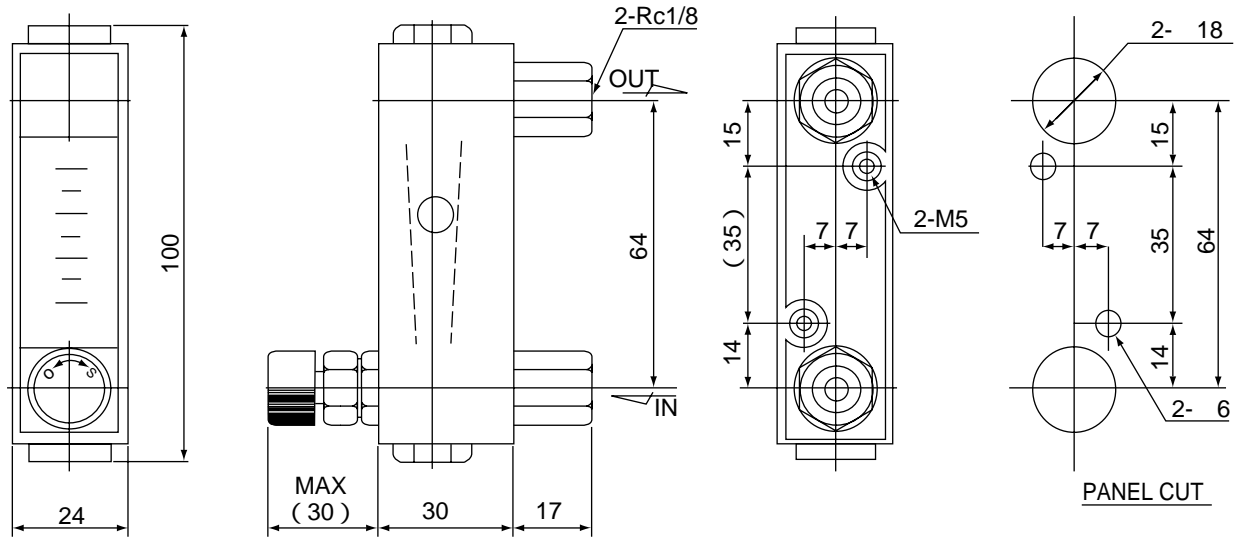




## DIMENSIONS

### ● STANDARD TYPE

(P-610-L0-BN-PF-R1 Valve provided at Inlet, Panel front screw fixing)



### ● Standard Material

Parts name	Standard material	Available material
<b>Body, Tapered tube</b>	Transparent Acryl (integral mold)	
<b>Packing</b>	NBR	Viton, CR
<b>Float</b>	SUS304 /Glass	SUS316, Ruby
<b>Valve body</b>	C3604	SUS304, SUS316
<b>Valve needle</b>	SUS304	SUS316
<b>Fitting</b>	C3604	SUS304, SUS316
<b>Cap</b>	C3604	SUS304, SUS316
Graduation board	Transparent PVC	

Parts whose names are described in **bold letters** are in contact with fluids to be measured.